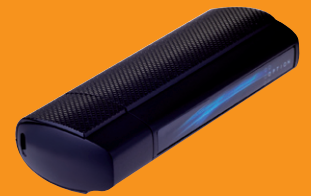


iCON® 505M



Ultra-Compact HSUPA USB Device Super fast speeds combined with sophisticated looks

- > Super fast: Downloads up to 14.4Mbps, uploads up to 5.76Mbps
- > Compact and lightweight: just 6.6cm long (inserted) and 33g
- > Future proof through easy internet upgrades
- > Access anywhere in Europe
- > Zero-CD® with *u*CAN® Connect Basic and *u*CAN® Move Ready*



iCON® 505M

Combining ultra-compact and stylish design, blisteringly fast Internet on the go and a micro-SD slot for your favorite files & media, the iCON® 505M is your all-round mobile companion.

With download speeds of up to 14.4Mbps and upload speeds of up to 5.76Mbps, it can easily transfer large files or handle high-quality streaming media at speeds that match or exceed those found in many homes and offices.

The micro-SD slot also enables you to use the device as a memory stick and provides the basis for you to benefit fully from Option®'s uCAN® Move* technology and related applications, making your mobile life all the easier and convenient.

Compatible with almost all popular computers, the iCON® 505M is ideal for those with an active mobile lifestyle wanting high speed Internet where you go and offering exceptional reliability and excellent, intuitive ease-of-use.

The styling is exceptional, too – with a sleek matt black body and complemented by an elegant cross-hatched finish the iCON® 505M embodies an understated air of sophistication.

But there is more yet. The iCON® 505M can also be customized in different color and texture combinations offering you a tailor-made choice to make a true individualist statement.

Ultra-compact and lightweight, super fast and good looking – the iCON® 505M really does have it all.

* uCAN® Move is sold separately



As part of the continual product improvement process, Option reserves the right to alter the specifications for this product. Copyright© 2009. Option, iCON, Zero-CD, uCAN and the Option logo are registered trademarks of OPTION.



Specifications

HSUPA/HSDPA/UMTS Air Interface

- > WCDMA 900/2100**MHz
- > Release 6 compliant
- > HSDPA Category 10 (14.4Mbps)
- > HSUPA Category 6 (5.76Mbps)
- > UE Power Class 3

EDGE/GSM Air Interface

- > 850/900/1800/1900 MHz
- > EDGE Power Class E2, GSM Power Class 1 at 1800/1900 MHz and Power Class 4 at 850/900 MHz.
- > Coding scheme UL & DL CS1-4, MCS1-9
- > Packet-switched data
 - > Multislot (E)GPRS Class 12, (E)GPRS Class B Type 1 MT
 - > Streaming, Background and Interactive QoS Classes Supported

Terminal Equipment Interfaces

- > Drivers: Windows® XP (Pro & Home), Windows Vista® 32/64bit, Windows® 7, Mac OS X and Linux
- > SIM-ME interface as specified in 3GPP GSM TS11.11 and GSM 11.12 with compliance to ISO 7816
- > SIM application toolkit support
- > NDIS or Standard modem emulation for compatibility with terminal programs/diallers and for use with proprietary operating systems. AT Interface 3GPP TS27.005, ATD*99# and ATD*99**<CID># support
- > Multiple communication ports for simultaneous data call and network coverage reports

**RX Diversity

Hardware specifications

- > Single, multi-color LED
- > Supporting 1.8 and 3V UICCs
- > SIM card interface compliant with 3GPP 31.101 and 31.102

- > USB 2.0, backward compatible to USB 1.1
- > 118MB of memory for operator applications and files

Environmental

- > Operating temperature -10 to +55°C
- > RoHS Compliant

Approvals & Certifications

- > All applicable regulatory approvals, Operator and Infrastructure IOT
- > Microsoft WHQL certified drivers