



GlobeTrotter Connect

User Guide

Connect anytime, anywhere

TABLE OF CONTENTS

1. SYSTEM REQUIREMENTS	3
2. PRODUCT FEATURES	3
3. SHORT DESCRIPTION AND INTENDED USE	3
3.1. Basic Use	3
4. INSTALLING AND SETTING UP GLOBETROTTER CONNECT	4
4.1. Installation	4
4.2. Installation process	6
4.3. Running GlobeTrotter Connect	6
4.4. Entering your PIN code	7
4.5. Checking Status	7
4.6. Exit GlobeTrotter Connect	8
5. SETTING UP A CONNECTION TO THE INTERNET	9
5.1. Connecting to the Internet	9
5.2. Disconnecting	9
5.3. Changing the program options	10
5.3.1. APN	10
5.3.2. Enable /Disable the Pin Code	11
5.3.3. Technology Selection	11
6. ADDITIONAL FEATURES	12
6.1. Using the SMS Centre	12
6.2. Network Selection	13
6.3. Auto-(Re)Connect	13
7. PRODUCT SUPPORT AND ADDITIONAL HELP	14
7.1. Technical Support	14
7.2. Help	15
APPENDIX A: LIMITED WARRANTY	15

1. SYSTEM REQUIREMENTS

Windows® 2000, XP, Vista
5Mb free hard disk space

2. PRODUCT FEATURES

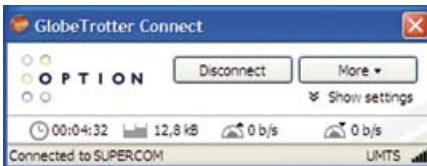
- Easy installation
- Simple intuitive user interface
- Compatible with most modern desktop and laptop PC's equipped with Microsoft Windows® 2000, XP, Vista

3. SHORT DESCRIPTION AND INTENDED USE

The GlobeTrotter Connect application is a small, easy to use tool to manage your connection to the Internet over 2G and 3G mobile networks. It is designed for use with all of Option's data products.

3.1. Basic Use

The focus is on simplicity and most users will use it only in basic mode, where it displays a window with network information and a Connect button. The main purpose is therefore simply to Connect/Disconnect to and from the Internet.



• Figure 1: GlobeTrotter Connect Basic View

While GlobeTrotter is connected the 'Connection Time', 'Volume' and 'Current Data speed' are displayed in the area just above the status bar. An arrow up followed by the upload speed in kbit/s and an arrow pointing down followed by the download speed.

4. INSTALLING AND SETTING UP GLOBETROTTER CONNECT

4.1. Installation

GlobeTrotter Connect can be installed in several ways:

1. You can install it from a CD if provided.
Browse on the CD-ROM and look for **setup.exe**.
Double click it to start the installation. The following screen appears.



• Figure 2: GlobeTrotter Connect Installation Wizard

Click “Next” to continue the installation and approve the License Agreement.



• Figure 3: Approve the License Agreement

Click “Next” to continue the installation and use the Browse button to specify the folder where you want to have the software installed.



• Figure 4: Specify installation folder

The GlobeTrotter Connect application is now ready for installation. Click “Next” and the actual installation will start.



• Figure 5: GlobeTrotter Connect ready to Install

After GlobeTrotter Connect is installed, the following screen will be shown. Click “Finish” to close the installation wizard.



• Figure 6: Successfully installed GlobeTrotter Connect

2. Download it free from <http://www.option.com/support/login.shtml> and run the installation file. Follow the same procedure as described in 1.

3. If your Option data product is equipped with Zero-CD™ technology the application is installed as soon as you connect the product for the first time. For a short time the ZeroCD icon will be visible in Explorer.



• Figure 7: ZeroCD drive

4.2. Installation process

The installation process is straightforward. You will see various balloons appear, indicating the installation process of your Option device.



• Figure 8: Found New Hardware Balloon

Wait until the following balloon appears to indicate that the process has finished.



• Figure 9: Your hardware is ready to use

4.3. Running GlobeTrotter Connect

As soon as you plug in a compatible communications device (Card, USB device...), GlobeTrotter Connect shows up in the Systray.



• Figure 10: GlobeTrotter Connect icon

GlobeTrotter Connect is now ready to make a connection. Don't forget that apart from the software the Option communications device also needs to be ready. E.g. you can't use the device while it isn't registered to the network or if the PIN code hasn't been entered yet.

4.4. Entering your PIN code

If you have enabled the PIN code on your SIM card you will automatically be asked to type it in. If enabled you won't be able to use your data device until you have typed in the PIN code. This will happen every time you power up the device.



• Figure 11: Pin Code Dialog

4.5. Checking Status

Once the PIN code is entered (or immediately if you have disabled the PIN code) the device will look for the network. You can check the status by moving your mouse pointer over the GlobeTrotter Connect icon to get a quick status report showing the network name, technology being used and the signal quality:



• Figure 12: Network Information Balloon

If GlobeTrotter Connect is opened, you can see the signal strength immediately in the lower right corner. If you need to know the signal strength more accurately (e.g. in fringe areas you may want to determine the location where you have the best reception) double-click on the signal strength indicator to see an enlarged view of the signal strength indicator.



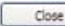

• Figure 13: Signal Strength Indicator

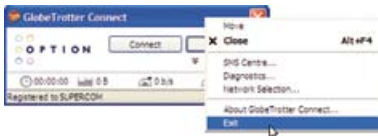
The indicator next to the signal strength shows 3G if you have a 3G coverage. Once you have a connection the indicator shows HS if an HSDPA (HS) connection was established.



• Figure 14: Enlarged Signal Strength Indicator

4.6. Exit GlobeTrotter Connect

When you click  or  this doesn't kill the application. It just retreats to the Systray (see Figure 10: GlobeTrotter Connect icon). This behaviour is equivalent to other Windows applications such as MSN messenger. To terminate the application you must 'Right Click' on the Title Bar and choose Exit.



• Figure 15: Exit GlobeTrotter Connect

5. SETTING UP A CONNECTION TO THE INTERNET

When you want to connect to the Internet you need to specify how you want to connect. You can do this in the settings screen (see the “Changing the program options” section of this manual).

As your mobile operator often preconfigures GlobeTrotter Connect for you the settings may already be in there.

5.1. Connecting to the Internet

To connect to the Internet simply click on the ‘GlobeTrotter Connect’ icon in the Systray (see screenshot) to display its menu. Click “Connect” to start the Internet connection.



• Figure 16: Connect

If software has not been configured, connecting to the Internet will fail. In this case refer to the “Changing the program options” section of this manual.

5.2. Disconnecting

To disconnect, click on the Systray icon to show the menu and select the “Disconnect” option.

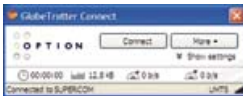


• Figure 17: Disconnect

5.3. Changing the program options

Although GlobeTrotter Connect is a simple and straightforward software it has a number of items that need to be configured at least once (either preconfigured by the operator or manually by the user).

To change the settings, launch the Globetrotter Connect main window. You can do this by double clicking on the Systray icon or by selecting “Open GlobeTrotter Connect” from the Systray Icon menu.



• Figure 18: Basic View

Click on “Show settings” to make the configuration options visible.



• Figure 19: Advanced View

5.3.1. APN

The Access Point Name (APN) defines your route to the Internet. Your mobile operator can supply the APN (some operators may also specify a user name and password if required).

Most users will never have to change this setting. If you have entered the APN manually a button saying Automatic will appear

next to the Save button. If you press this button the software will try to 'guess' the APN needed based on your SIM.

5.3.2. Enable/Disable the Pin Code

By clicking on 'Enabled' or 'Disabled' you can enable or disable the PIN code on your SIM. For security reasons you will have to provide the PIN code before you can disable the PIN code. If you enable the PIN code you'll have to enter a new code.

5.3.3. Technology Selection

Most of the time you should allow your data product to decide what technology to use. Sometimes local conditions will make connecting to the Internet difficult and the default setting "UMTS Preferred" may not give optimum performance.

In these circumstances you can experiment by forcing the data connection on to "UMTS Only" or "GPRS Only". Remember to switch back the setting to "UMTS Preferred" when conditions change.

6. ADDITIONAL FEATURES

Via the More button additional features are available.

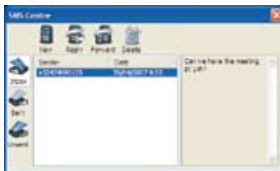


• Figure 20: Accessing additional functionality

6.1. Using the SMS Centre

To launch the SMS Centre click the More button and select SMS Centre. On the left side you see the different folders:

- Inbox
- Sent
- Unsent (contains the draft SMSses)



• Figure 21 SMS Centre

Click on any of these folders to see the messages it contains. To read a message click on it in the Sender or Date column. The text of a selected message is shown in the grey box on the right.

To Reply or Forward a message select it as above and press the appropriate button. A new message window opens containing the Reply number respectively the 'to be forwarded' text.

New messages

To create a new message press the New button. The New SMS Message window opens and you can start typing your message (max. 160 characters). To send the message fill in the recipients phone number and click Send. If you prefer to send your message at a later time click the Save button which automatically stores your message in the Unsent folder for later use.



• Figure 22 New Message

DELETE MESSAGES

To delete a message select it as explained above and press the Delete button.

6.2 Network Selection

GT Connect will automatically select a network for you. However you can select a network manually. To do this, simply choose 'Network Selection' via the More button and select Manual. The GlobeTrotter will start scanning for available networks (this may take several minutes). Once the scan is completed the Select button will allow you to choose a network. In a similar way you can go back to Automatic mode.

6.3 Auto-(Re)Connect

If 'Auto Connect' is selected GT Connect will try to connect as soon as the net-

work and the GlobeTrotter are available. If a connection is dropped GT Connect will try to re-establish the connection as soon the network is available again.

If the you manually Disconnect (Press the Disconnect button) the Auto-Connect feature is disabled until you re-launch GT Connect



• Figure 23 Activating Auto-Connect

Note: Auto Connect only works on the Home network.

7. PRODUCT SUPPORT AND ADDITIONAL HELP

The GlobeTrotter Connect updates will be made available from time to time at: <http://www.option.com/support/login.shtml>

Additional support can be found at: <http://support.option.com/support>
Clicking on the Option logo while you are connected automatically brings you to this page.

7.1. Technical Support

Questions and answers regarding GlobeTrotter Connect can be found on our Support website: <http://support.option.com/support/faq.php>

Technical questions can be posted after registering through our online Support Web on: <http://support.option.com/support/newticket.php>
For registering please go to: <http://support.option.com/support/register.php>

7.2. Help

To access the Help file go to Help via the More button.

APPENDIX A: LIMITED WARRANTY

Customer accepts unconditionally, without any warranties, the License on the Software AS IS and without any further claims, demands or requests. OPTION SHALL NOT BE LIABLE TO THE CUSTOMER FOR ANY INDIRECT, INCIDENTAL, CONSEQUENTIAL, PUNITIVE, RELIANCE OR SPECIAL DAMAGES.

Copyright ©2008 OPTION. All rights reserved. Option, GlobeTrotter, GlobeTrotter Connect and the Option logo are registered trademarks of OPTION.

GlobeTrotter Connect is a trademark of OPTION. All third-party trademarks are the property of their respective owners.

