

Read Me

Driver Version 1.0 for Windows[®] 95/98 for FirstFone[®] Radio Card for GSM-900 from OPTION International

The Driver for Windows 95/98 enables easy and comfortable use of FirstFone Radio Card for GSM-900 running Windows 95/98. Using any communications software, your PIN code is requested automatically when you make a connection for the first time. After entering your PIN code, functionality of data transmission, sending and receiving electronic mail or faxes and connection to the internet via GSM is provided.

Installation

Before you begin installing the software, please back-up your current computer data.

IMPORTANT

In order to use the Driver for Window 95/98, you need to install the modem on your computer first.

The necessary file is on the CD or Disk from OPTION International provided with the FirstFone Radio Card for GSM-900.

However, should the required extension not be available, you will find the necessary information using the link:

<http://www.option.com>



In order to install the Driver, double-click the *Setup.exe* icon.

The installation script will automatically copy the program into the System.

NOTE

If you update from Internet Explorer 4.0 to 5.0 after installation of Driver 1.0 for Windows 95/98 do as follows:

- ▶ Make sure that you delete the Driver 1.0 for Windows 95/98 first.
- ▶ Then install the Internet Explorer 5.0.
- ▶ Reinstall the Driver 1.0 for Windows 95/98.



After installation is completed, insert the FirstFone Radio Card in a PC card slot of your computer. Running a communications application, your PIN code is requested automatically when you make a connection for the first time. Connected with the GSM network you can use all services provided by the network operator.

Make sure that you have established a Dial-Up Networking connection for the FirstFone Radio Card on your Windows computer. For information please refer to the manual for Windows 95/98.

For further information regarding installation please refer to the manual you received together with your computer and the manual for FirstFone Radio Card for GSM-900.

Power Management while using the FirstFone Radio Card

To provide a more efficient Power Management, there is a preference in the PIN dialogue available:

► *Permanently activate card YES*

Default setting. If the PIN code is entered once, the FirstFone Card will be registered to your GSM network permanently, even if the current application is closed.

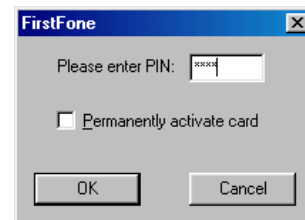
Any other communication software can be used any time - it is not necessary to reenter the PIN.



► *Permanently activate card NO*

If the PIN code is entered, the FirstFone Card will be registered to your GSM network as long as the current application is running.

If the communication application is closed the FirstFone registration to the network will be canceled. If any new communication software is opened it is necessary to reenter the PIN to get connected again to the GSM network.



NOTE

For further questions please contact
OPTION International:

E-Mail:
support@option.com

Telephone:
UK: +44-(0) 8 70-6 07 24 83
Germany: +49-(0) 18 05-00 07 24
France: +33-8(0) 03-09 00 46
Belgium: +32-(0) 16-31 74 11
Netherlands: +32-(0) 16-31 74 11
Denmark: +45-38 48-72 08
Norway: +47-23 16-22 07
Sweden: +46-(0) 8-58 77-04 63
North America: +1 65 05 58-15 70
Asia Pacific: +61-(0) 24 22-1 97 57

© 1999 Rindle & Partner GmbH - a member of the
OPTION International Group

FirstFone Radio Card for GSM-900 is a registered trademark of
OPTION International.
Microsoft and Windows are registered trademarks of Microsoft
Corporation.

Mention of products is for informational purposes only and constitutes neither an endorsement nor a recommendation. Rindle & Partner GmbH assumes no responsibility with regard to the performance or use of these products.

